

Sibylle Stöckli Studios

Switzerland (UTC+1)

Phone: +41 79 278 04 80

E-mail: contact@sibyllestoeckli.com

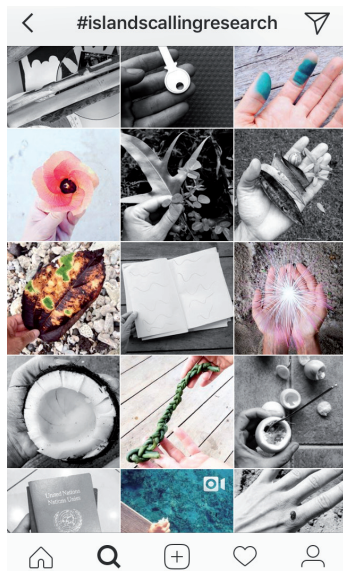
photography © Marie Taillefer



SWISS POST ADDRESS

Rue des Glaciers 10
CH-1004 Lausanne

Please follow @sibyllestoeckli
observations on www.instagram.com



Updated: 12.02.2021

CURRICULUM VITAE

1979 born in Pompaples, CH.

Languages

Français, Italiano, Deutsch, English, ...

2019 – today

NutrixGOLD® – mineral nutrition for Life matters
www.nutrixrevolution.com

2014 – today

SUN DAY WORK SHOP, Rawfood knowledge.
Talk, workshops , meal, apero dinatoire.

2015 – 2019

Master Degree at the G.R.I.D. Institute, CH.
www.g-r-i-d.space

2013 – today

GLOBAL DESIGN RESEARCH, worldwide trip
interviews, research, workshops, internships.
www.global-design-research.ch

2012 – 2014

Bildsymbole der Schweiz, Hochschule Luzern, CH.

2007 – 2011

m³, Events & promotion of Swiss Fashion design

2005 – today

orformOrnorm communication AD, CH.

2005 – 2015

Founder and director of louise blanche, CH

01.03–2005

Barber & Osgerby Internship, London, UK

2000–2004

Bachelor degree, Industrial and product design,
Ecal, Lausanne–CH.

NOW – WOW

ON INSTAGRAM

@louiseblancheCollection

THE "CONFETTI" SCARF AT THE MUDAC SHOP
FOR ITS 20TH BIRTHDAY! YAY!!

INSPIRED BY SWITZERLAND
DESIGN GROUP SHOW BY GABRIELA CHICHERIO

05–15.11 DESIGN DAYS
GALERIE VICE VERSA, LAUSANNE, CH

20.11.2020 – 01.2021
GALERIE OKRO, CHUR, CH

01–02.2021
ALL DECORATIVE ART MUSEUM MOSCOW, RU

Sibylle Stöckli Studios

2020 – 2002 MIX OF PROJECTS

BYOM, RELAX MASK FOR HYPERAKTIV.LI
SWISS PAVILION, DUBAI DESIGN WEEK,
SHANGAI DESIGN WEEK 2020
INSPIRED BY SWITZERLAND
ALL DECORATIVE ART MUSEUM MOSCOW, RU
DESIGN DAYS, GALERIE VICE VERSA
GALERIE OKRO, CHUR, CH
WE ARE FRUITSAMBASSADORS.COM
ONLINE. LAUSANNE – KUALA LUMPUR
L'ARRÊT, PERFORMANCE JOËLLE FONTANNAZ
FESTIVAL D'ART SCÉNIQUE, LAUSANNE
A TALK WITH MAURICE MAGGI FÜR JANICK
SCHMID, HYPERWERK DIPLOMA, BASEL
ISLANDS CALLING, 2020, TENERIFE RESEARCH
SPOON AIRWAYS, EDITION AMIAMI
CHALLENGER, SIMON PACCAUD & FRIENDS
FERME DE LA CHAPELLE, GENÈVE, 2019
SOCIAL DESIGN, ATELIERS CHALAMALA
MUSEUM KUNST UND GEWERBE, HAMBURG
PUBLICATION, SOCIAL DESIGN ALS SOZIALE
INNOVATION, LARS MÜLLER PUBLISHERS
FORWARD SESSION A TALK ABOUT RESEARCH
STUDIO BANANA, LAUSANNE
LABORATOIRE: UN ESPACE EN MOUVEMENT
MOVES, SPACE & TALK
FOND CANTONAL D'ART CONTEMPORAIN DE
GENÈVE, JURY, DESIGN, FASHION, JEWELLERY
LE VALDŌ, RAWFOOD & LIFE WORKSHOP
SOCIAL DESIGN, MUSEUM FÜR GESTALTUNG
TONI AREAL, ZÜRICH
ISLANDS CALLING, 2018, FIJI RESEARCH
DESIGN BIENNALE ZÜRICH CATALOGUE
ISLANDS CALLING, 2017, BORNEO RESEARCH
ESPACE CONTEMPORAIN SELECTION
ATELIERS CHALAMALA, SWISS DESIGN
AWARDS 2017, BASEL
LEAVING ROOM – TIPI ZÜRICH
SUISSEHAUS SELECTION BY ADRIEN ROVERO
DE L'ARGILE AU NUAGE, SCENOGRAPHY,
UNIVERSITÉ DE GENÈVE, MADAME PARIS
TRAVEL SHOPPER BAG, QWSTION ZÜRICH
ATELIERS CHALAMALA, BRANDING DESIGN
PORTFOLIO WHITE, QWSTION STORE VIENNA
LES TOPOPHONIKUES MUSIC FESTIVAL
IMAGINARY FABRIC, SAURER AG, ARBON,
SWISS PAVILION, WWW.IN-BETWEEN.WORK
FIRST LONDON DESIGN BIENNALE
LA GRANDE PLACE, GROUP SHOW,
CACY, YVERDON-LES-BAINS
FOLIO COLLECTION, QWSTION INVITES
PRA PALEX PALACE GARDEN, 2016
INTRAMUROS MOVING FURNITURE DESIGN
& PAPEETE COLLECTION, DAVEL 14, CULLY
NEWS BASE FLUIDO SPACE, ARTSY, NY, USA
WITH CHARLOTTE HERZIG, DESIGN CURIO,
DESIGNMIAMI/BASEL 2015
ATELIER LAURE PASCHOUD SCENOGRAPHY
CHIC CHAM, LAUSANNE
DO IT YOURSELF, MUSEUM FÜR GESTALTUNG
LOUISE BLANCHE, LANDESMUSEUM SHOP

HABIT-HABITAT, FASHION WORKSHOP
EAA, LA CHAUX-DE-FOND
SUPER POSITION, DEPOT BASEL
GLOBAL DESIGN RESEARCH RESIDENCY
FANTASTICO GRENZE EXOTICO CANVAS
GLOBAL DESIGN RESEARCH EXHIBITION
WITH LAURA PREGGER, DEPOT BASEL
AUA LICHT FORM FUTURI
GLOBAL DESIGN RESEARCH NEWSPAPER
WITH JACQUES BOREL, ZÜRICH, 2014
DNSEP TOULOUSE, BACHELOR JURY
COUTURE GRAPHIQUE, MUDAC SHOP
HIER, TODAY, DEMAÏN, TALK, ECAL
BILDSYMBOLS DER SCHWEIZ, RESEARCH
HOCHSHULE LUZERN
SUPER-HERO, FASHION WORKSHOP, EAA
KALEIDOSCOPE, YOUNG CH DESIGN 2013
PRO HELVETIA BEIJING
ARCHIVO, TALK, INVITED BY REGINA POZO &
FRANCISCO TORRES, MEXICO CITY
FÖRDERPREIS MKG HAMBURG NOMINATION
PARURES, FASHION WORKSHOP, EAA
DESIGNMARKETO, BAR ALTO, ATLANTA
BELL LAMP, DISCIPLINE
SALONE DEL MOBILE MILANO 2012
HOCHSHULE LUZERN STUDENTS TALK
LE CORBUSIER, FASHION WORKSHOP EAA
TAKE A SEAT, Z AM PARK CAFÉ, ZÜRICH
SCHWARZ WEISS, MUSEUM FÜR GESTALTUNG
ZÜRICH
MARIE-LOUISE WORKSHOP, MARIE JAMBERS
ENZO MARI SEATS WORKSHOP, DEPOT BASEL
DESIGN ZENTRUM CHRISTOPHE MARCHAND
REFLÉXIONS SUR LE VERRE, MATTEO GONET
GARDEN AT HOME, CASA MAGAZINE,
SALONE DEL MOBILE DI MILANO 2011
LIBRAIRIE LA FONTAINE SIGNALÉTIQUE
WITH AUREL SACK
ROLEX LEARNING CENTER, EPFL, RENENS
APARTAMENTO MAGAZINE
& DESIGNMARKETO, FOODMARKETO,
LONDON DESIGN WEEK 2010
'TRASH WORKSHOP'
BACK TO DEATH – BACK TO LIFE
REFLÉXIONS SUR LE VERRE, MOSCOW, RU
SPOT. FUNDACJA, POZNAN, PL
ATELIER PFISTER LAUNCH ZÜRICH
TABULA RASA COLLECTION
BERLINER MAUER, SANG BLEU MAGAZINE
GALERIE 12MAIL, PARIS
TOTEMS, RADOSTAR, DESIGN DAYS GENEVA
WONDER BAR, ETERNAL TOUR FESTIVAL 2009
A LITTLE PIECE OF MIND, MARQUE, 2008
ISBN: 978-0-9552018-1-3, P.3-6, 71-72.
NEWCASTLE PROJECT SPACE, LONDON
DES GOÛTS ET DES COULEURS,
CALL ME I'M AN ARTIST, MADAME PARIS
& SANDRO SANTORO
VIEW, VISIONS MULTIPLES, SCENOGRAPHY
ESPACES CONTEMPORAIN, NANOO, GENÈVE
TEACHING DESIGN HISTORY
UNIVERSITÉ POPULAIRE DE LAUSANNE
LOUISE BLANCHE IS SINGING IN THE RAIN!
GALERIE LIP'S, GENÈVE
VIEW: VISIONS MULTIPLES, SCENOGRAPHY

#SibylleStoeckliStudios

BIG-GAME, ATELIER OÏ, PHILIPPE CRAMER
LOUISE BLANCHE AT SWISS INSTITUTE SHOP
NEW YORK
ETHICAL FASHION DAYS, GENEVA
AIRFORK ONE, PRODUCT DESIGN
WUNDER STANZA II, SAMMELN UND ORDNET
KUNSTMUSEUM SOLOTHURN,
WITH DONATELLA BERNARDI
LA SOURCE, MY DESIGN DISTRICT 2008
PROTOTIPI MANZONI, THEATRO MANZONI
MILANO, SUPPORTED BY MOVER SPORTSWEAR
& IKEA STIFTUNG SCHWEIZ
WITH THE GREAT HELP OF SOOISHI
INOUT CONFIG.01, OUTDOOR WOODEN
FLOOR, CARTE BLANCHE MUDAC, LAUSANNE
GALERIA VINÇON, BARCELONA
BIENNALE DE DESIGN 2006, ST ETIENNE
LE GRAND HORNU, BELGIQUE
THE AMERICAN INSTITUTE OF ARCHITECTS
SAN FRANCISCO
CADRE & CADRES, GALERIE MARCEL BÉGUIN
2008, LAUSANNE
L'EFFET PAPILLON, 1989-2007, CENTRE
D'EDITION CONTEMPORAINE, GENÈVE
P. 376-378, ISBN: 978-3-905829-77-8
LES AMIS DE LOUISE BLANCHE AVEC MICHEL
COTTING, GALERY SHARK, GENEVE
IGLOO PARTY, PART II, ART MÔTIER 2007
IGLOO PARTY, PART I, GALERY AP4, LUGANO
WUNDER STANZA, AVEC ZORRO & BERNARDO
2007, BAC, GENEVE
LOUISE BLANCHE, PULLS, SIROP ET CHANSONS
CAFE DE GRANCY, AVEC SANSHIRO, 2006
FOOTBALL FEVER, DESIGN MUSEUM TANK
LONDON
SWISS DESIGN AWARD 2005, MUDAC
BOURSES FÉDÉRALES DE DESIGN,
BIRKHÄUSER, ISBN-10: 3-7643-7474-8, 2005
ECAL: DESIGN INDUSTRIEL, GALERIE KREO
LOUISE BLANCHE & LOWRIDER WORKSHOP
WITH SERGE NIDDEGER, FRIBOURG
I LOVE BAGS, LA PLACETTE, LAUSANNE,
ADRIEN ROVERO & GREGORY GOTUET
WORKSHOP WITH AALEX BETTLER, LONDON
ROLL AWAY, WITH RONAN BOUROLLECC
WITH ADRIEN ROVERO, EDOUARD LAMARAUD
RAPHAËLE ZENGER, SALONE SATELITE DEL
MOBILE DI MILANO 2004
CUCINA FESTIVA WITH RONAN BOUROLLECC
WITH ADRIEN ROVERO, EDOUARD LAMARAUD
RAPHAËLE ZENGER, GALERIA LA POSTERIA
SALONE DEL MOBILE 2003, MILANO
SOMEWHERE TOTALLY ELSE, LONDON DESIGN
MUSEUM
ECAL: AU DOIGT ET À LA BAGUETTE
DESIGN MUSEUM TANK, LONDON
GALERIE KLEMENS GASSER & TANJA GRUNERT
NEW YORK
GALERIE BINNEN, AMSTERDAM
GALERIE LAFAYETTE, PARIS
CENTRE CULTUREL SUISSE, MILANO
INTERSTICES, MATALI CRASSET AU MUDAC
LAUSANNE, 2002.

SPECIAL THANKS, MERCI & TERIMA KASIH

VINCENT JUFER A.K.A. SKILE, JACQUES BOREL,
LAURA PREGGER, MARIE JAMBERS, CHRISTIAN KAEGI,
STEFANIE PREIS, LOUISA KEEL, CHARLOTTE HERZIG,
VIVIANE MOREY, MATTEO GONET, ADIL EL HAIDAOU,
RONAN BOUROLLECC, GABRIELLA CHICHERIO,
LORENZA ANTOGNINI, MICHEL BONVIN, ANDREA
ROCCA, CARMILLA SCHMIDT, MARIE TAILLEFER, JULIE
MICHEL, ANNE HELÈNE DARBELLAY, EDOUARD
LARMARAUD, RAPHAËLE ZENGER, FRANCISCO TORRES,
IRÈNE ET NELLY GROSJEAN, GEOFFRET PLUQUET,
ARTHUR RHABI, VALENTINE PIZZERA, THIBAUT
PENVEN, CHRISTOPHE MARCHAND, ERIC AGBÉMÉ-
NAH, PAULINE LEMBERGER, JESSICA CHAUFFERT,
AGATHE CHEROUVRIER, TRISTAN CARÉ, AUREL SACK,
CELINA & MARC HWANG, LAURENCE STOFEL, PIERRE
KELLER, AALEX BETTLER, LARA GARCIA REYNIE, ADRIEN
ROVERO, SIMON PACCAUD, JÉRÔME RIGAUD, SANDRO
SANTORO, ALEXANDRA RUIZ, LAURENCE BODENMANN,
FLORENCE GRIVEL, MARYLL CROUSAZ, DONATELLA
BERNARDI, DANIEL SCHLAEPFER, CAMILLE SAUTHIER,
VIRGINIE REBETZ, FRÉDÉRIC DEDELLEY, MARCIEL,
MARC ISENSCHMIDT, LAYLA GRUBER, JULIE MONOT,
MELCHIOR KNELLWOLF, BRAUEN & WÄELCHLI,
MARTINO GAMPER, SERGE NIDDEGER, SANSHIRO
FANKHAUSER, FABIO MIGGIANO, NABIL DZULKIFLI.



URBAN MONUMENTS depuis 2001 – selection d'images
A4, A5, A6, Cartes de visite. 2017

Sibylle Stœckli ~~Studies~~

BIO-GRAPHIE: LA VIE & LE DESIGN

Sibylle Stœckli a reçu un enseignement de design industriel et de produit à l'ECAL au moment de la croissance de la section sous le rayonnement de son directeur, Pierre Keller.

Le terreau était riche! La lumière, forte. Les fertilisants extérieurs, ont été donnés de façon périodique et intensive sous forme de cours ou de workshops avec des accélérateurs de croissance qui favorisèrent une belle pousse.

Elle a reçu un diplôme de Bachelor design industriel avec mention en 2004 et à sa sortie au grand air, il s'en est suivi une forte floraison grâce à l'obtention du prix des bourses fédérales en 2005.

Après une dizaine d'années d'approfondissement de ses propres racines, comme la création du label textile "louise blanche", le design de produits, de mobilier ou des concepts d'expositions, elle décida également de développer de nouvelles branches, juste pour grandir dans d'autres directions.

C'est avec son projet de recherche initié en 2013, "Global Design Research" et l'Institut G.R.I.D qu'elle nourrit sa propre recherche théorique, son positionnement personnel et ses valeurs.

Modes de fonctionnement, façons de faire et savoirs faire: qu'il s'agisse du monde du design ou de nos sociétés de consommation, elle remet tout en question.

C'est avec une nouvelle vitalité que cette belle plante :)) en expansion, produit à 360° et de façon florissante. Aujourd'hui, les fruits qu'elle porte mûrissent lentement mais en abondance.

À travers les ateliers "SUN DAY WORK SHOP" elle propose un regard neuf et positif sur l'alimentation et ses actions chimiques dans la matière physique.

Vous l'aurez compris, Sibylle Stœckli est multiple et éclectique. Elle disperse ses graines à tout vent, ici et maintenant, là où elle se trouve.

Produits, Concepts, Espaces, Recherche, Ecriture, Synergies, Workshops, Direction Artistique, Talks, Production, Catering Rawfood, Design sur mesure avec des ingrédients de qualité...

Quel est le point commun de toutes ces activités?

Le mouvement du corps humain et social. Une connexion avec le monde du vivant, partout ou l'on peut jouer avec l'Art de la transformation.



ISLANDS CALLING – Fiji Islands Research, 2018.

**"AUJOUR'DHUI
J'AI TELLEMENT
DE CORDES À MON ARC
QUE JE PEUX
EN JOUER DE LA HARPE."**

SUN DAY WORK SHOP

CATERING RAWFOOD SUR MESURE

Apéritif dinatoire, Repas de Fêtes, Brunch, Buffets, Délices à domicile, Pâtisseries au parc, Pic-Nic, Gastronomie au jardin, Méditations gustatives, Productions de Craquelin & Granola sur commande, propositions et demandes spéciales bienvenues.

ATELIERS D'ALIMENTATION VIVANTE

Apprendre les connaissances de base: Biogénique ~ Bioactif ~ Biostatique ~ Biocidique jus de Légumes, jeunes Pousses, Kombucha, déshydratation, pistar, lait de Noix, fromage affiné, lacto-fermentation, confiture de Fruits secs, jouer avec les couleurs, textures, formes & formats, en groupe ou en privé.

sundayworkshop@sibyllestoeckli.com
merci



LE GOÛT,
C'EST NOTRE
PATRIMOINE
PERSONNEL
EN
EXPANSION.

ALWAYS LEARNING
TEACHING SOMETIMES

SUN
DAY
WORK
SHOP

WE ARE FRUITS
AMBASSADORS®
@FRUITSAMBASSADORS

* we are fr
developing
who care ab

physique, sensible, émoti



SOHO
WORK
SUN
DAY



EXPÉRIENCE GASTRONOMIQUE VIVANTE

Prendre le temps de manger, de goûter, de découvrir de nouvelles saveurs, de s'impregner de mélanges aux mariages inattendus!

Idéal pour les personnes curieuses et/ou qui vivent avec des allergies ou des intolérances alimentaires comme le gluten ou le lactose.

Tout est cru et vivant, transformé en dessous de 42° pour préserver les nutriments. Les ingrédients sont de qualité BIOlogique et/ou Demeter, toujours choisis en fonction de la saison, production régionale, suisse ou au plus juste par rapport à l'élément recherché, et/ou du moment de fabrication.

Tout est gourmand, nourrissant et vivifiant!

CATERING LIVING RAW FOOD SUR MESURE

Apéritif dinatoire, Repas de Fêtes, Brunch, Buffets, Délices à domicile, Pâtisseries au parc, Gastronomie au jardin, Méditations gustatives, Pic-Nic, Productions de Craquelin & Granola sur commande, propositions et demandes spéciales bienvenues.



Sibylle Stœckli Studios

sundayworkshop@sibyllestoeckli.com
+41 79 278 04 80

#rawfood
#glutenfree
#lactosefree
#sugarfree
#merci



ATELIER DÉGUSTATION – REPAS DÉCOUVERTE
UNE EXPÉRIENCE GASTRONOMIQUE VIVANTE

LE MENU AUTOMNE–HIVER–PRINTEMPS 2021

COCKTAIL APÉRITIF

FORÊT DE CHIPS & FEUILLES SAUVAGES

POUSSES & FEUILLES AUX AGRUMES

CARPACCIO & RAVIOLES DE RACINES

SEMOULE DE RACINE DU JOUR

BOULES, BOULETTES & FERMENTATIONS

CONFITS, CONFITURES & PICKLES

CRAQUELINS ASSORTIS

UNE MONTAGNE DE DOUCEUR SUR ASSIETTE

ATELIER–REPAS POUR 4 PERSONNES
≈ 3 HEURES

111



ATELIER D'ALIMENTATION VIVANTE & VÉGÉTALE
BASES DE VIE, SAVOIRS-FAIRE
TRANSFORMATION DES VÉGÉTAUX

Apprendre à faire: le pistar, le kombucha, les lactofermentations, le lait de noix, yogurth, fromages, la déshydratation, le granola, jouer avec les couleurs, textures, formes & formats, en fonction des besoins, informations personnalisées, en groupe ou en privé.

≈ 6 HEURES & SUR MESURE *

1 PERS. 360	2 PERS. 270	3 PERS. 210
4 PERS. 180	5 PERS. 162	6 PERS. 144
7 PERS. 126		

* D'autres formats d'ateliers sont imaginables et adaptable à votre espace, événement, et quantité de personnes spécifique. Merci de me contacter.

Les tarifs s'entendent en CHFS et par personne. Ils sont indicatifs, à définir en fonction du lieu.

Sibylle Stœckli Studios

A NUTRICIOUS REVOLUTION

We, [the people], have forgotten why we grow food and most of all, why we are eating.

When we talk about Nutrition, we are talking about a part of us, because the main reason why we grow and eat food is to nourish ourselves.

We are facing a new age problem that is at the core of our cells. Most accessible food is excessively processed, to the point of having little or no nutrients in it, including not enough minerals.

Mineral nutrition is important to support a healthy immune system. If our immune system is fortified, we are likely more protected and reactive to diseases. If plants are properly nurtured and fed with all minerals they would naturally received in a wild environment, they are much more immune to diseases, just like animals, just like us humans.

Only bioavailable minerals, such as plant-derived ones, will be completely absorbed by our cells and will truly benefit our health.

Food is not just a lifeless thing but a complex living matter that needs new understanding and a more holistic approach. For this reason in our research and studies we take in consideration such as Biophotons, Frequencies, Angstroms/Bovis scale and few other factors that can tell us a lot more about the quality & vitality of our food.

We have become a society lacking of essentials vital needs but we [NutriX], got a solution.

NutriX is offering the complete set of 89 mineral elements in their bioavailable form, ready to bring the optimal health in any cell of any living being.

We are the pioneers of a new Agri-Culture. A culture we define as "Bio-Nutrizionale" (Organic & Nutritional). Our vision crosses Food and Agri-culture sectors like never before and gives answers to something we forgot about Life.

Do you have a dream to make grow?

You are welcome to contact us, to create the future of your own Food with us. Every-thing is important and possible. We are open.

Let's Sea it, [together].



>>> www.nutrixrevolution.com



Team work research, Puglia, IT, 2019.

FOUNDATIONS OF LIFE

Since the first step of humankind... it's been a long way, and we are still on the quest for mineral knowledge, for us to be able to reach our optimal well being.

"The blood plasma is like seawater: every element is present in the same balanced proportion"

Dr. Rene' Quinton - French Physiologist and Aviation pioneer

Seawater, Human Blood and Chlorophyll have a very similar chemistry, except that Seawater is based on Sodium [Na], Hemoglobin on Iron [Fe] and Chlorophyll on Magnesium [Mg]. Apart from the fact that their main elements are different, the other ones fall in order, in the same exact proportion.

NutriXGold® is a "superconductor mineral nutrients" composed by a full spectrum of 89 macro, trace and ultra-trace minerals in a bioavailable form obtained from pristine 100% organic and natural sources only.

We added levels of knowledge with practical applications for effective solutions. Patented technologies are used to restructure water at the molecular level and maintain a permanent negative charge (-mV).

89 Organic & Active ingredients:
STRUCTURED WATER, CHLORIDE, SODIUM, MAGNESIUM, PHOSPHORUS, SULFATE/SULFUR, CALCIUM, POTASSIUM, IRON, ZINC, MANGANESE, BROMIDE, CARBONATE, STRONTIUM, BORON, COPPER, MOLYBDENUM, SILVER, GOLD, IODINE...

... and other 70 essential minerals in trace and ultra trace naturally present in chlorophyll and seawater.

Sibylle Stöckli Studios

RESEARCH IS STILL ON

>>> www.global-design-research.com

#globaldesignresearch

#AUALICHTFORMEFUTURI

#NEWSBASEFLUIDOSPACE



Sibylle Stöckli Studios

ATELIERS CHALAMALA – 2012-2016

Maple, Cherry and Pine woods. Made in Switzerland by people with schizophrenia

Brand identity, product design, shop scenography, furniture,
visual communication concept in collaboration with Jacques Borel, Zürich >>> www.jacquesborel.ch
Photography by Jonas Marguet

>>> www.ateliers-chalamala.ch

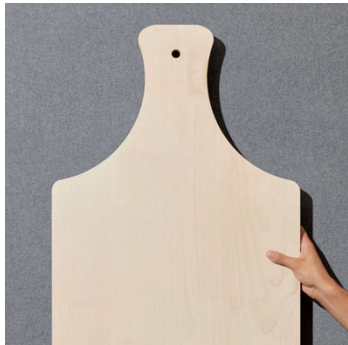


Sibylle Stœckli Studios

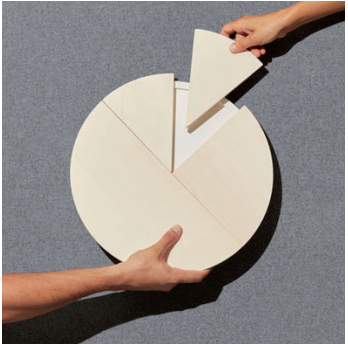
ATELIERS CHALAMALA



01 – PLANCHE SIMPLE



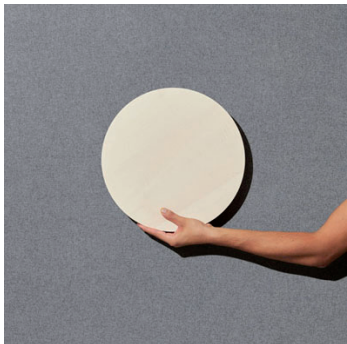
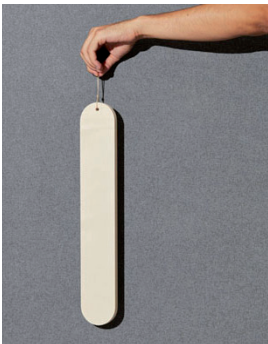
02 – PLANCHE PAIN



03 – PLANCHE FROMAGE



04 – PLANCHE SAUCISSON



05 – PLATEAU DE FORME



06 – PIÈCE MONTÉE DE LA GRUYÈRE

photography © Jonas Marguet

Sibylle Stœckli Studios

ATELIERS CHALAMALA



06



07 – CUIILLÈRE CRÈME



08 – TUILES DE LA GRUYÈRE



Sibylle Stöckli Studios

SOCIAL DESIGN EXHIBITION

BRAUNSCHWEIG LANDESMUSEUM, DE / 27.06.2020 — 14.02.2021

MUSEUM FÜR KUNST UND GEWERBE / 21.03 — 27.10.2019

MUSEUM FÜR GESTALTUNG, ZÜRICH / 05.10.2018 — 20.01.2019

PUBLICATION, SOCIAL DESIGN ALS SOZIALE INNOVATION

MUSEUM FÜR GESTALTUNG, LARS MÜLLER PUBLISHERS, 2018

SWISS DESIGN OF THE YEAR 2017 – MAGAZINE ESPACE CONTEMPORAIN

SWISS DESIGN AWARD 2017 – NOMINEE



- 01 — PLANCHE SIMPLE (E)
100%, 170 x 325 x 15 mm
200%, 340 x 640 x 21 mm
300%, 510 x 960 x 29 mm
- 02 — PLANCHE PAIN (E)
H 21 mm
petit, ø 240 mm
moyen, 240 x 360 mm
grand, 240 x 480 mm
- 03 — PLANCHE FROMAGE
set «assiette fromage», ø 360 x 23 mm (E+M)
2 tranches 1/8, 1 tranche 1/4, 1 tranche 1/2
- 04 — PLANCHE SAUCISSON (E+L)
H 15 mm
petit, 80 x 240 mm
moyen, 80 x 360 mm
grand, 80 x 480 mm
- 05 — PLATEAU DE FORME (E)
H 21 mm
«fromage», ø 360 mm
«tuile», 360 x 540 mm
«pain», 360 x 720 mm
- 06 — PIÈCE MONTÉE DE LA GRUYÈRE
bol «noisettes», 100 ml, ø 110 x 40 mm (E)
bol «noix», 600 ml, ø 150 x 75 mm (S+C)
assiette «petits fruits», ø 180 x 15 mm (C)
assiette «fruits», ø 240 x 22 mm (C)
assiette «meringue», 120 x 240 x 15 mm (E)
- 07 — CUILLÈRE CRÈME (E)
«double», 92 x 170 x 45 mm
«demi», 45 x 130 x 15 mm
- 08 — TUILES DE LA GRUYÈRE (C)
6 spatules «glace», 20 x 110 mm
2 spatules «tartine», 25 x 160 mm
2 spatules «sauce», 30 x 230 mm
2 spatules «salade», 35 x 300 mm
1 spatule «soupe», 40 x 370 mm

C=cerisier massif E=érable massif L=fil de lin brut M=MDF laqué blanc S=sapin massif

Produits dans les ateliers d'Épagny, Suisse
Design Sibylle Stöckli

www.ateliers-chalamala.ch
ATELIERS CHALAMALA

Photographie: Jonas Marguet

Sibylle Stœckli Studios

TRAVEL SHOPPER
QWSTION X SIBYLLE STœCKLI

The QWSTION+Sibylle Stœckli Travel Shopper is a lightweight, undercover bag to bring along wherever you're heading. It offers multiple carrying options, and in spite of its simplicity can be carried as a backpack when you need your hands free.

Use it as a pouch with the outside pocket for your essentials. When you need the capacity of the bag to carry something, your valuables remain inside the bag in the main pocket.

>>> www.qwstion.com/shop

QWSTION



Sibylle Stöckli Studios

TRAVEL SHOPPER
QWSTION X SIBYLLE STÖCKLI

black VOLCANO, light grey MOON, dark green FOREST, dark blue OCEAN,
royal blue SKY, yellow SUN, beige EARTH & orange LAVA



@qwstion_official



TRAVEL SHOPPER
QWSTION X SIBYLLE STœCKLI

fabric 100 % Nylon with PU coating
straps 100 % Nylon

32 x 10 x 40 cm
11 L
0.19 kg

- zipped valuables pocket on the outside
- backpack strap / shoulder strap
- self-stowing pocket
- water-resistant



photography © Olivier Nanzig



Sibylle Stœckli Studios

now on instagram
@louiseblancheCollection

make your orders
>>> louiseblanche@sibyllestoeckli.com

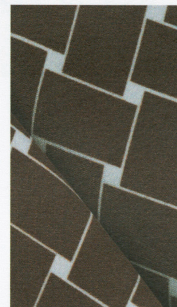
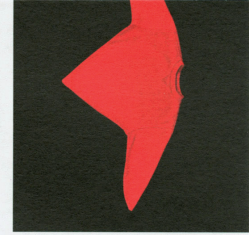
graphic design © Stefanie Preis, Burri-Preis, Zürich

photography © svenja-kaufmann, Amsterdam. Repro-photography © Daniela droz, Lausanne.

louise
blanche



des langes au linceul, les textiles nous enveloppent et nous entourent tout au long de notre vie.
die objekte von louise blanche sind nicht aus holz, nicht aus metall, nicht aus plastik, nicht aus glas, nicht aus stein.
la terra mette 24 ore per fare un giro su sé stessa ed è ciò che definisce i giorni e le notti.
design is a way of life.



louise blanche

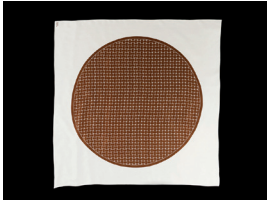
price list

to make an order
please
send an e-mail to
louiseblanche
@sibyllestoeckli.com

with products names
& quantity
your contact address
the sending address
phone number

we will send you
an invoice
including post fee.

foulard panier



CHF 126

90 x 90 cm
100% soie
impression jet d'encre
brun
fabriqué en Italie

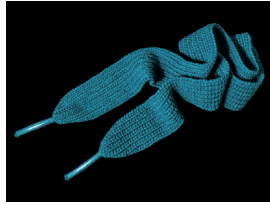
foulard confetti



CHF 180

120 x 120 cm
100% soie
impression jet d'encre
bleu et rouge
fabriqué en Italie

écharpe lacet



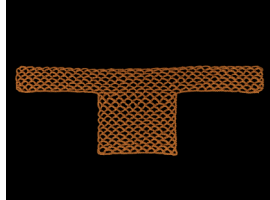
vert pacifique



vert paille
CHF 81

longueur: 2 mètres
47% laine vierge merino
23% alpaca
30% microfibre
tricoté en Croatie
> lavage doux à la main

écharpe pullover



beige tourte de linz



brun chocolat



bleu je sais pas quoi
CHF 90

fabriqué à la main en Croatie
110 x 55 cm
70% laine merino
30% polyamid
> lavage doux à la main

pull éléphant



CHF 45

enfant 7-8 ans
sweat «fruit of the loom»,
90% coton, 10% polyester
sérigraphie par lowrider.ch



CHF 63

sweat "american apparel"
100% coton gris chiné
sérigraphie par lowrider.ch
L: 170 cm x 65 cm
XL: 175 cm x 69 cm
XXL: 180 cm x 72 cm

t-shirt 246



trio-pack
CHF 81

tailles: 2 + 4 + 6 ans
100% coton vert
t-shirts "american apparel"
sérigraphie par lowrider.ch
motif brun

**louise
blanche**

**noeuds de
cravates**

cravate vintage
avec fermoir de broche

à utiliser
sur une veste
une chemise
un sac

...
ou sur la tête!

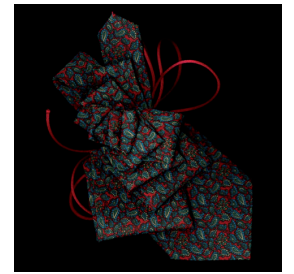
CHF 120



spring n° 09



summer n° 10



autumn n° 11



spring n° 11



summer n° 13



autumn n° 13



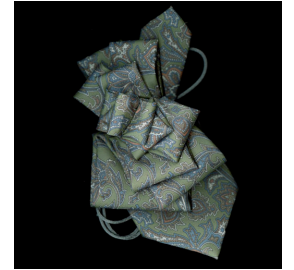
spring n° 01



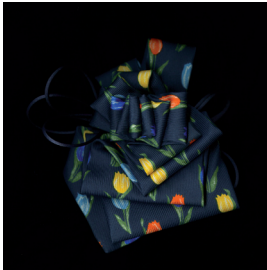
spring n° 14



summer n° 15



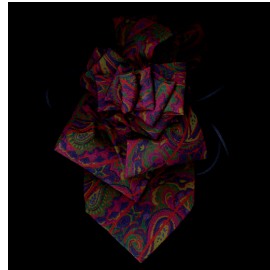
autumn n° 16



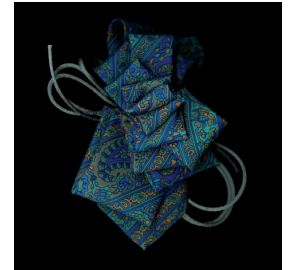
spring n° 02



spring n° 15



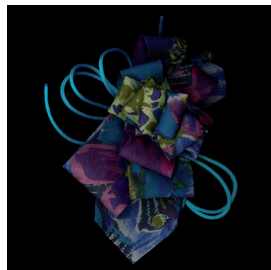
autumn n° 07



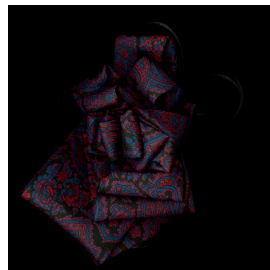
autumn n° 17



spring n° 03



summer n° 02



autumn n° 08



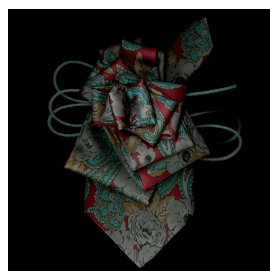
winter n° 02



spring n° 08



summer / n° 03



autumn n° 10



winter n° 04

Sibylle Stöckli Studios – Samples selection of edited works



Paper Samples Garland:
Ilford print A0
on alu & plexiglass



Poster "rond" folded, lacquered aluminium

COLLAGES, POINTS...
ET COUP DE POING!

Glass for Bar Alto, DesignMarketo



étagère-3 tables:
Tour-de-Peilz, Edition Atelier Pfister

The candle that never dies:
ceramic and PE tap

Pen holder and mug: ceramic



Pull-out tray, folded, lacquered aluminium

COLLAGES – MAISON DU VALLON – 2012 – photographies © Nicolas Delaroché, Lausanne.

Sibylle Stöckli Studios

PORTFOLIO

#FOLIOCOLLECTION

A. 16,5 × 12 × 12 cm / B. 25 × 20 × 20 cm / C. 35 × 28 × 28 cm
1 mm stainless steel, folded, powder-coated. 2 holes ø 4 mm.
Chalk White, Kaki Red, Frida Blue. Made in Switzerland.



A metal sheet folded in 2 equal parts. We all know this object. But this bookend is more than that... It is a modular and multifunctional storage and display.

What are these 2 holes? For production purpose, we have to get one hole to hang the metal piece on a hook in the powder coating oven. I just add an other hole. With this feature, this piece could be mount to a wall as a shelf.

To combine with nails, magnets, rubber bands, imagination, boards,... or with the wooden support "Bloko" to display an open book. Turn it up-side-down in all directions and use however you like it!

>>> ask the Folio catalogue

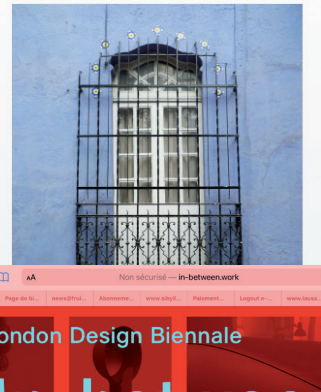
Sibylle Stöckli Studios – connect

>>> global-design-research.tumblr.com



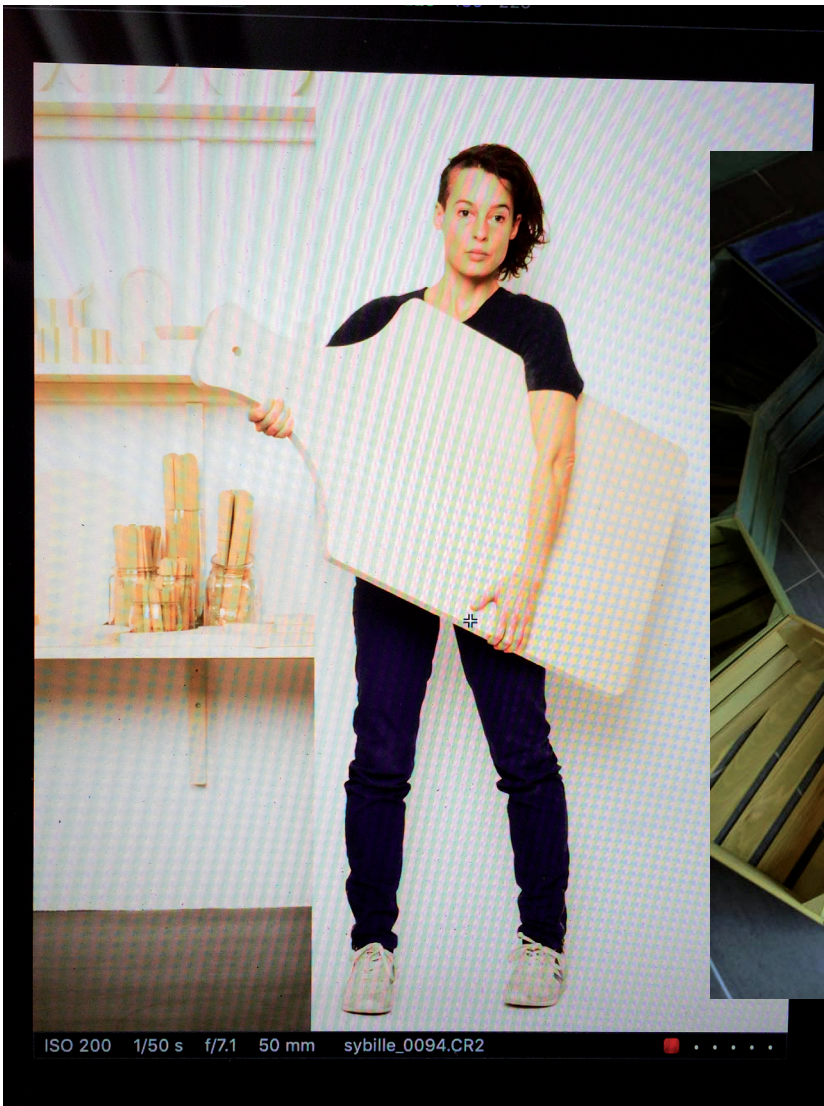
Soul Food VS Raw Food

an everyday life gallery
around the project journey Global Design Research

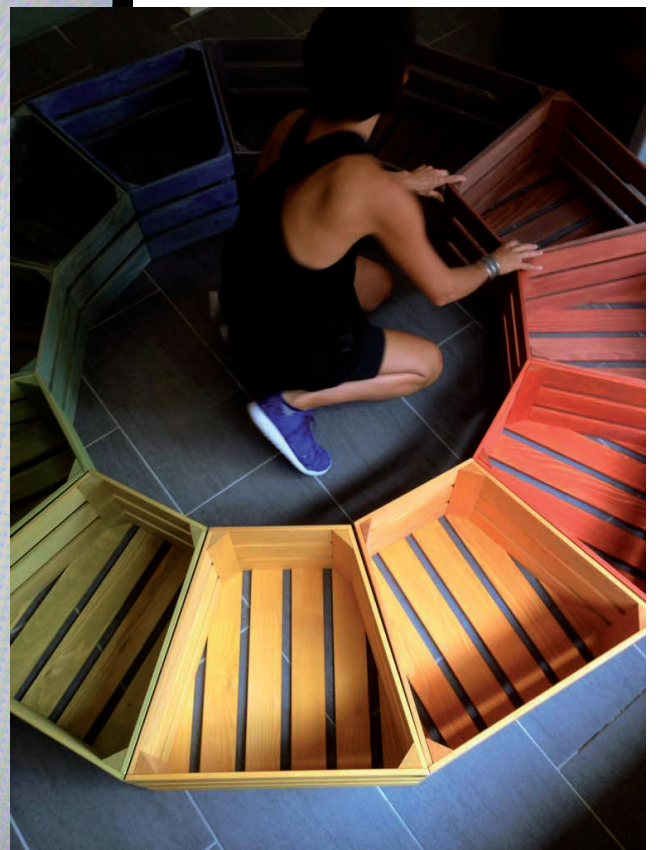


<http://www.in-between.work>

photographie © Noura Gauper pour le Laboratoire, RE-LABO, 2018, Lausanne.



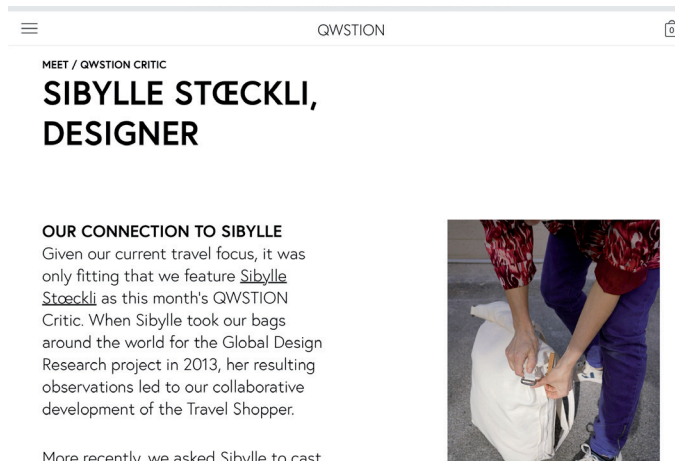
ISO 200 1/50 s f/7.1 50 mm sybille_0094.CR2



moving space @leValdo, Pontaise 24, Lausanne
2018–2019 >>> www.levaldo.ch

#SibylleStoekliStudios – reach

too eclectic?
let's talk, please, contact me. thank you.

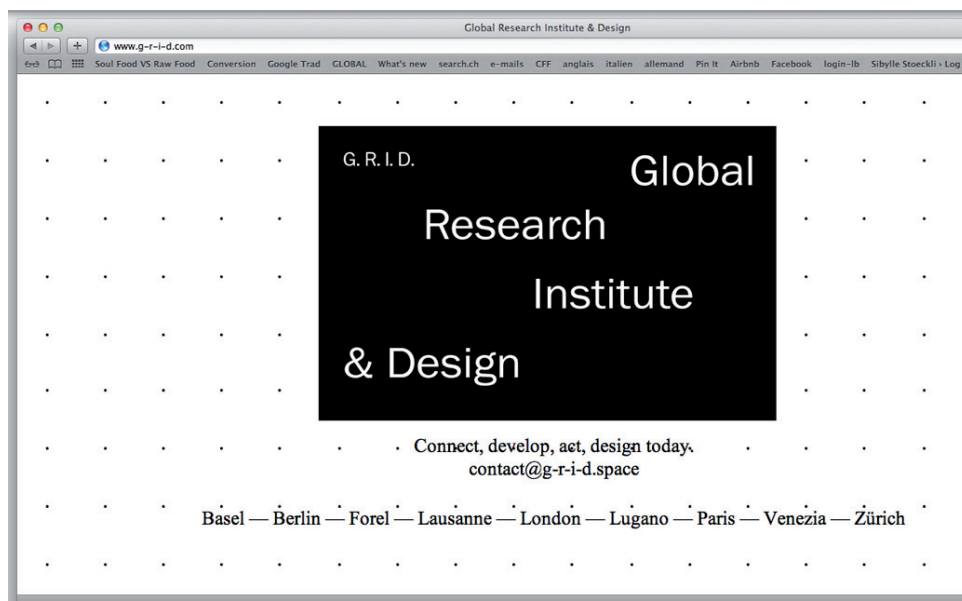
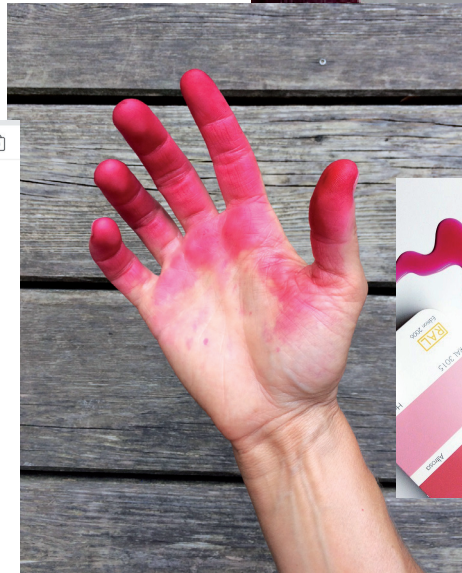



MEET / QWSTION CRITIC

SIBYLLE STÖCKLI, DESIGNER

OUR CONNECTION TO SIBYLLE
Given our current travel focus, it was only fitting that we feature Sibylle Stöckli as this month's QWSTION Critic. When Sibylle took our bags around the world for the Global Design Research project in 2013, her resulting observations led to our collaborative development of the Travel Shopper.

More recently we asked Sibylle to cast



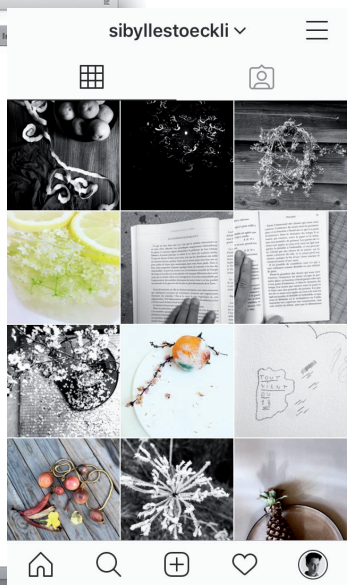
Global Research Institute & Design

www.g-r-i-d.com

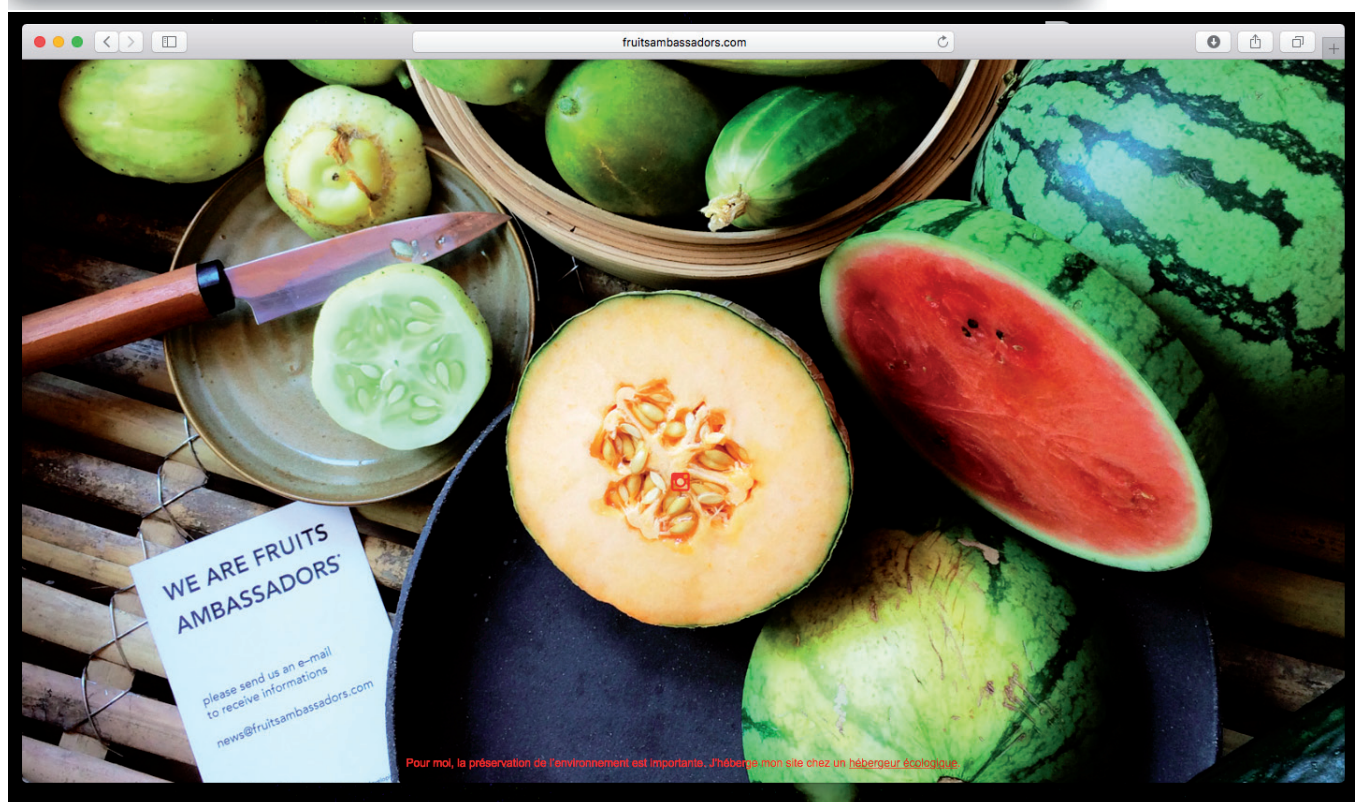
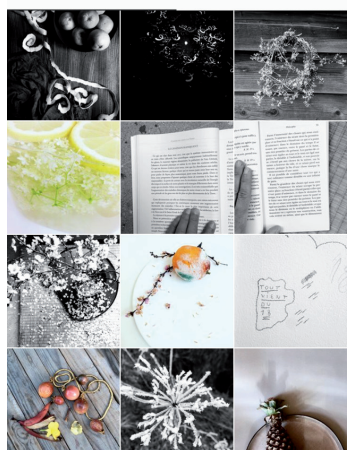
G. R. I. D. Global
Research
Institute
& Design

Connect, develop, act, design today.
contact@g-r-i-d.space


Basel — Berlin — Forel — Lausanne — London — Lugano — Paris — Venezia — Zürich



sibyllestoekli



fruitsambassadors.com



**WE ARE FRUITS
AMBASSADORS**

please send us an e-mail
to receive informations
news@fruitsambassadors.com

Pour moi, la préservation de l'environnement est importante. J'héberge mon site chez un hébergeur écologique.